



SEISMIC SHIELD PRO



Harnessing Military-Grade Technology to Protect Your Site

In the modern age, the need for proactive and intelligent security measures is paramount.

Critical infrastructures, solar farms, national borders, correctional facilities, and private communities all demand specialized protection solutions.

The **Seismic Shield Pro**, powered by the innovative InvisiFence Plus system, is specifically designed to cater to this intricate demand, ensuring that every inch of your perimeter is under constant, vigilant surveillance.

This is the future of safeguarding vital assets, ensuring not only detection but also verification, ensuring your defenses are always a step ahead of potential threats.

Whether you're fortifying a nation's borders or securing a high-tech solar farm, this solution promises precision, reliability, and peace of mind.

Comprehensive, Undetectable, and Advanced Perimeter Protection





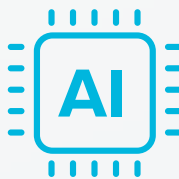
Invisible & Vandal Proof

Being a buried system, the Seismic Shield Pro is undetectable, making it an uncompromising deterrent against intruders who can't tamper with what they can't see.



Weather Proof

The InvisiFence Plus system remains unaffected by common environmental challenges like fog, rain, or the blinding rays of the sun. This ensures consistent and accurate detection regardless of the conditions.



Intelligent Threat Analysis

Integration with advanced analytics means not just detection, but accurate threat analysis. Determine in real-time the nature of the intrusion - be it human, vehicle, or otherwise.



Flexible and Scalable

Designed to function independently or in tandem with existing security apparatuses, ensuring a seamless addition to your current security protocols.



InvisiFence Plus system

Buried Sensors: At the heart of the Seismic Shield Pro is the InvisiFence Plus system. These sensors are buried underground, creating a 6m wide by 25m deep invisible fence. This continuous barrier ensures comprehensive detection and makes bypassing virtually impossible without triggering an alert.

IDIS PTZ Camera

High-Resolution Surveillance: Once an intrusion is detected, the camera is the eye in the sky. With pan, tilt, and zoom capabilities, this camera provides high-resolution real-time video feedback. Its rapid orientation ensures that potential threats are captured and tracked seamlessly.

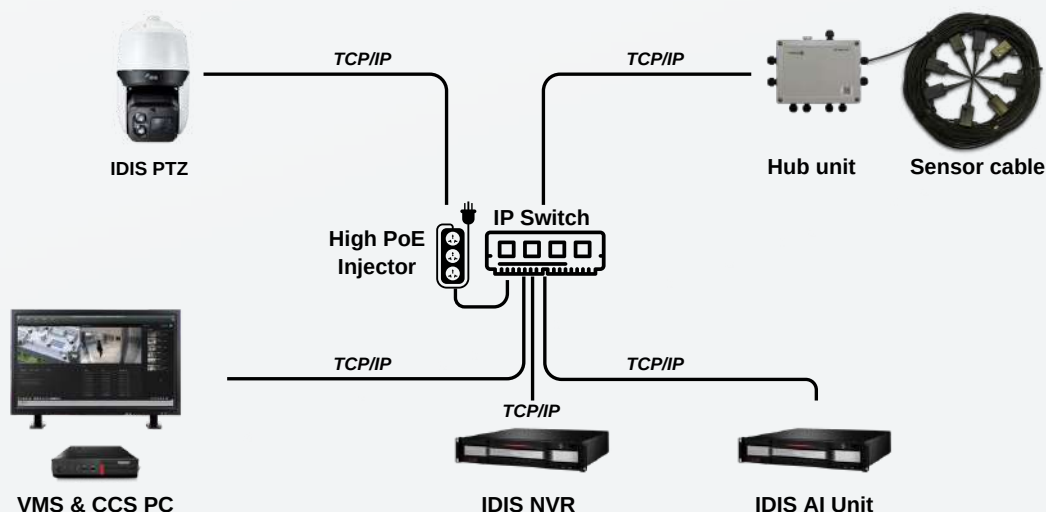
AI Deep Learning Analytics

Deep Learning Verification: All intrusion alerts pass through the AI Unit which leverages state-of-the-art deep learning algorithms. This system confirms whether detected movements are genuine threats or false alarms, drastically reducing response times to real incidents and minimizing unnecessary alerts.

Command & Control Software

A comprehensive management tool for the Seismic Shield Pro system, our software offers real-time monitoring, and alarm management. In addition, the integrated VMS server securely stores all video feeds and intrusion alerts, providing security personnel with crucial historical data for post-event analysis, evidence collection, and system optimization.

SYSTEM DIAGRAM



At **SensoGuard**, we understand that peace of mind doesn't come from just having a system in place, but from the assurance that your system is reliable, comprehensive, and cost-effective. That's exactly what the Seismic Shield Pro offers.



Complete Out-of-the-Box Solution

Seismic Shield Pro is a holistic solution, crafted with all essential elements for state-of-the-art perimeter security. From intrusion detection, through AI-driven verification, to high-resolution video surveillance, every aspect is pre-integrated, ensuring seamless operation.



No Hidden Costs

Seismic Shield Pro has no recurring fees. Whether it's for updates, licenses, or core functionalities, you won't find surprise costs down the line. This transparency ensures that clients get maximum value for their investment.



Optional 3rd Party Integration

While Seismic Shield Pro stands as a comprehensive solution, we recognize diverse security preferences and needs. If you wish to incorporate third-party cameras or Video Management Systems, the architecture of our system is adaptive. Our dedicated team at SensoGuard will provide the necessary support and assistance.

